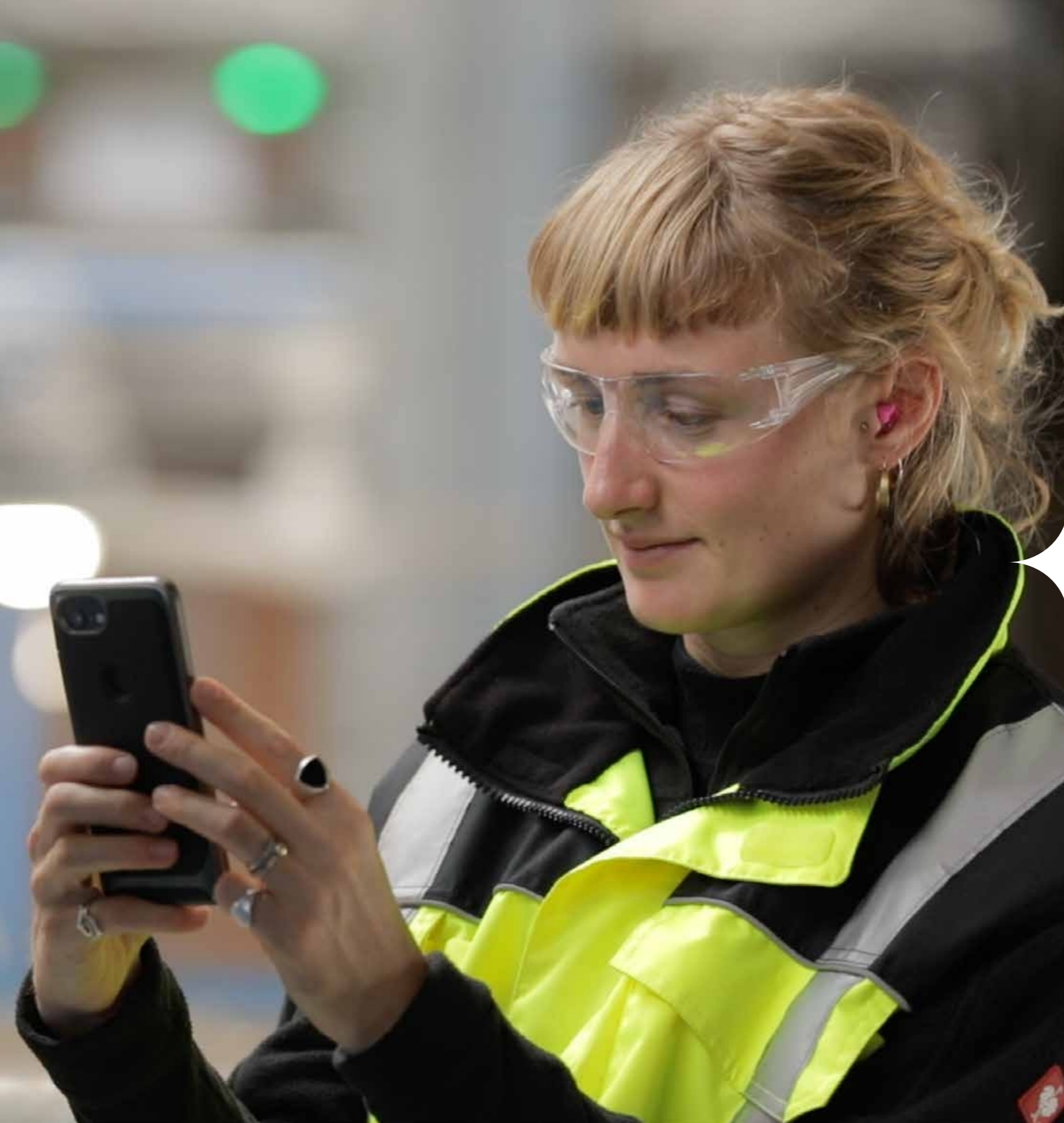




 **TOMRA  
INSIGHT**

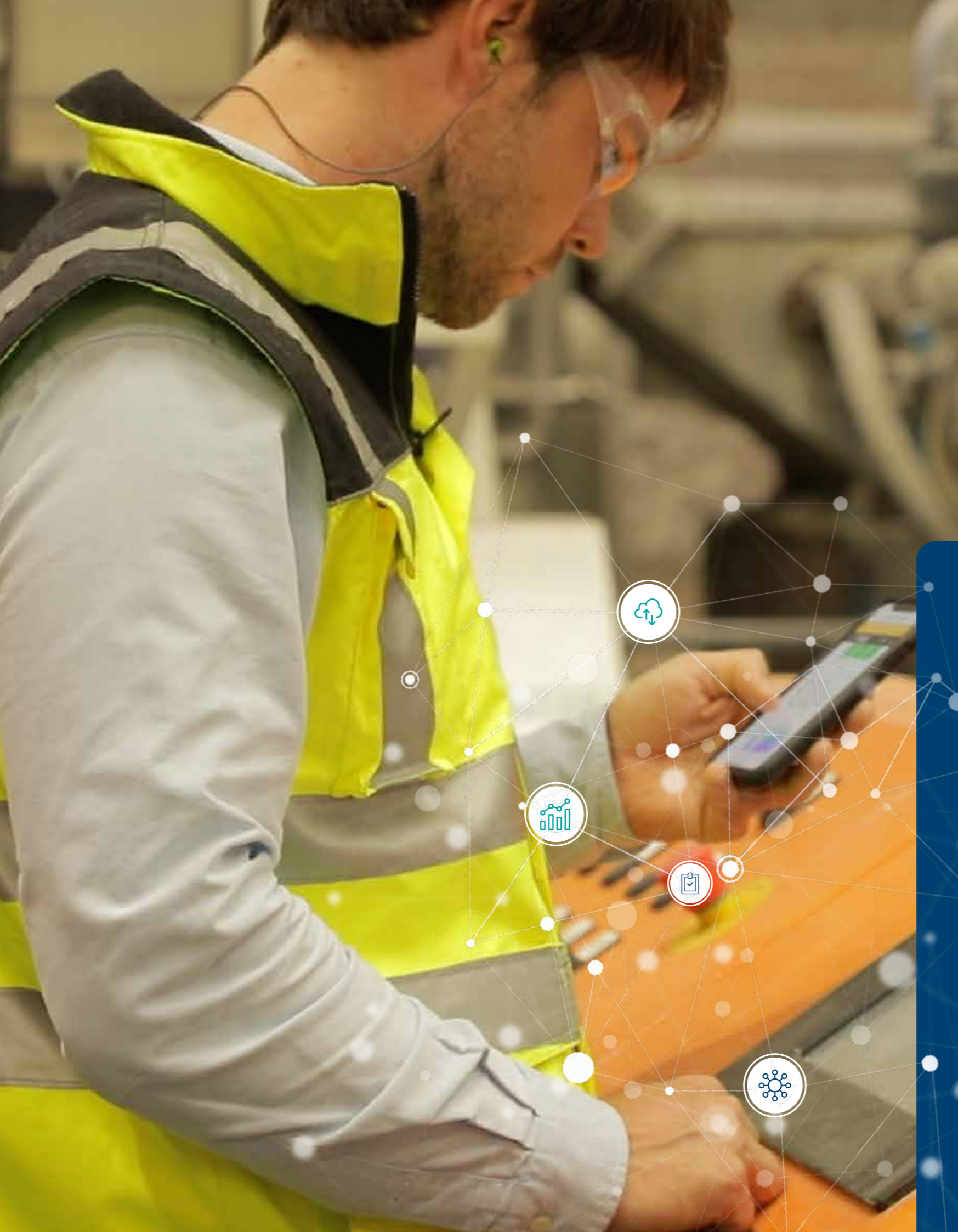
## Connect to **POSSIBILITIES**

Turn your sorters into connected devices with TOMRA Insight



## CONTENTS

<b>TOMRA Insight at a Glance</b>	<b>1</b>
<b>Connect to Better Insights</b>	<b>2</b>
<b>Connect to Secured Data</b>	<b>3</b>
<b>Connect to Service</b>	<b>4</b>
<b>Maintenance &amp; Cleaning</b>	<b>6</b>
<b>Shift Review</b>	<b>7</b>
<b>Quality Control</b>	<b>7</b>
<b>Connect to Transparency</b>	<b>8</b>
<b>Connect to Updates</b>	<b>10</b>
<b>Get Connected</b>	<b>11</b>



Sorting installations today are still often seen as individual pieces of equipment in a larger production process, while the future of the sorting industry lies in the adoption of Industrial Internet of Things technology.

TOMRA Insight, makes sorter information and data accessible on a user-friendly and easy to access web-based portal. The data not only comprises of near real-time information of the machine status and health but also on the product being processed and additional documentation, spare part consumption, and service activities.

## TOMRA INSIGHT AT A GLANCE

- Machine, plant, and company-wide operational monitoring and reporting in one place
- Secure access from desktop and mobile devices – anywhere and at any time
- Easy & remote support from TOMRA's service engineers, enabling quick and easy identification and resolution of any operational issues

### Allowing you to:

- Take fact-based decisions based on metrics and reports
- Improve the efficiency of internal service personnel
- Fastly identify future maintenance requirements
- Reduce equipment downtime and organize swift intervention by operators



## Connect to BETTER INSIGHTS

Connected customers have unrestricted access to a fully customizable reporting toolkit. The module allows you to freely create reports and show insights on the status and operation of your TOMRA sorters in one place.

Built on the industry-standard Microsoft Azure platform, it embraces the idea of software as a service. All data is securely stored and processed in the cloud and made accessible through an intuitive browser-based user interface.

Given the portal can be accessed through your web browser of choice, it is available on any device connected to the internet. You can give full or restricted access to any employee, and your co-worker can enjoy the comfort of working with TOMRA Insight anywhere or anytime, on a desktop computer or a mobile device.

“Mineral processors can now move from making decisions based on experience and local observations to decisions based on experience and hard facts. This means TOMRA Insight can help reduce waste rock and downstream processing costs, enabling processors to earn more dollars per ton.”

**Dean Labuschagne, Service Sales Manager**  
**TOMRA Mining**

## Connect to SECURED DATA

To ensure data privacy and the security of your operations during the process of obtaining, using, and storing your sorting data, TOMRA Insight is built and managed with a rigorous focus on data protection. All this to prevent your data from being misused, your systems breached, and the secure operation of your equipment compromised.



## Connect to SERVICE

TOMRA Insight enriches your production details with service reports, spare part orders, and product manuals, giving operators all the necessary information for operating and maintaining the equipment.

Rather than being tied to the machine to capture this data, key personnel remotely connect via a secure internet connection from the office, home, or field. Workers access all information on mobile devices or computers while also TOMRA service technicians can remotely access the data, providing any remote support required.

Through the smooth identification of problems costs are minimized and you are enabled to make well-informed decisions more efficiently and faster compared to before.

“Before, we could only extract data by physically going to a machine’s screen, and it wasn’t always easy transferring that data to a computer. Now it’s easy to consult the data remotely from our office.”

**Jorrit Beetsma, Process Technician at  
Wellman International**  
TOMRA Recycling customer

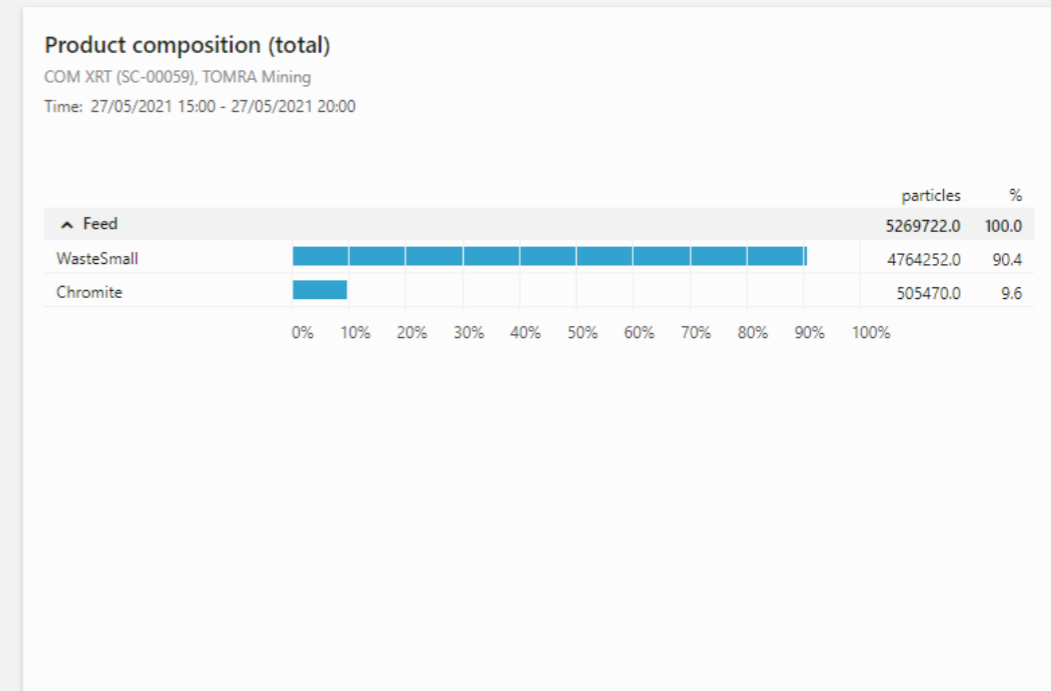
# MAINTENANCE & CLEANING

- Which events took place?
- Were any sorting programs changed?
- Should we clean a specific sorter (part) or solve a technical problem?

Time	Machine	Type	Value	Description
06/07/2021 14:25:39	COM XRT (PT-00019)	Program change	Eject_Waste_02_10-30mm	Active sorting program: Eject_Waste_02_10-30mm
06/07/2021 14:06:30	COM XRT (PT-00019)	Program change	Eject_Waste_06_10-30mm	Active sorting program: Eject_Waste_06_10-30mm
06/07/2021 13:08:10	COM XRT (PT-00019)	Program change	Eject_Mn_03_10-30mm	Active sorting program: Eject_Mn_03_10-30mm
06/07/2021 06:46:05	COM XRT (PT-00019)	Alarm	Error	XRay source
06/07/2021 06:45:32	COM XRT (PT-00019)	Alarm	Error	Water chiller
06/07/2021 06:42:54	COM XRT (PT-00019)	Alarm	Error	Compressed air
06/07/2021 06:39:29	COM XRT (PT-00019)	Alarm	Error	CVD-Card
06/07/2021 06:34:07	COM XRT (PT-00019)	Alarm	Error	Sensor bay
06/07/2021 06:24:43	COM XRT (PT-00019)	Alarm	Error	Protective door belt
06/07/2021 05:53:46	COM XRT (PT-00019)	Alarm	Error	CVD-Card

# SHIFT REVIEW

- How much did we process? Which defects were detected?
- Is this in line with the planning? Did we process the expected volume?



# QUALITY CONTROL

- Did the sorted fractions fit the expectations?
- Which thresholds were defined? Do we notice any major fluctuations?



## Connect to TRANSPARENCY

TOMRA Insight is our secure, nearly real-time, and on-demand monitoring platform that allows you to turn your sorters into connected devices and to transform sorting from an operational process into a strategic management tool.

Wherever and whenever access is required, relevant data can be securely accessed by anyone in your company and by the TOMRA Service team, if required.

Providing transparency in your sorting process, TOMRA Insight enables you to:

- **reduce downtime and operational costs**
- **maximize your throughput**
- **boost your sorting performance**
- **optimize your output quality**



“Using the information we are getting from TOMRA Insight, we are now managing product-quality more precisely to meet customer expectations, improve product control and allocation, see where we need to help sorters meet targets, reduce waste, and make better use of the equipment with less downtime.”

**Andrzej Kopacz, Operations Manager at  
The Jersey Royal Company**  
TOMRA Food customer

## Connect to UPDATES

TOMRA Insight collectively benefits both our customers and TOMRA. You provide the process expertise, and we provide the sorting expertise. Operational data from our machines installed across the globe is helping us to improve service and maintenance programs, predict parts' lifetimes and even develop better machine set-ups, technologies, and applications.

The lessons we can learn together are almost infinite and the more experienced we become the more we'll be able to optimize processes and add value.

TOMRA Insight is constantly becoming more powerful as we are continuously developing it in response to your needs and priorities. New functionalities and features are released every three weeks.



## GET CONNECTED

Try our cloud-based TOMRA Insight service for free and test its value for your operations.

TOMRA Insight services is a subscription-based service offered separately from the sorting equipment. In the first months, you can enjoy the full functionality of this service at no expense. This gives you the chance to explore its possibilities, and us the opportunity to prove its value.



A man wearing a white short-sleeved shirt and a white hard hat is shown in profile, looking towards the right. The background is a bright, sunny outdoor setting with green foliage and a clear blue sky. The lighting is bright, creating strong shadows on the man's shirt.

**TOMRA**

Otto-Hahn-Straße 2-6,  
56218 Mülheim-Kärlich  
Germany

**T** +49 2630 96520

**E** [TOMRA-Insight@tomra.com](mailto:TOMRA-Insight@tomra.com)

**W** [insight.tomra.com](http://insight.tomra.com)

 **TOMRA  
INSIGHT**